



**Customer:** Indy Cannabis Co/Deez Distro  
**Address:** 1234 Indianapolis Blvd  
Indianapolis, IN 46260  
**Sample ID:** D9 Infused Sauce/Parmesan Garlic  
**Matrix:** Edible  
**Labnumber:** 24A0029-02

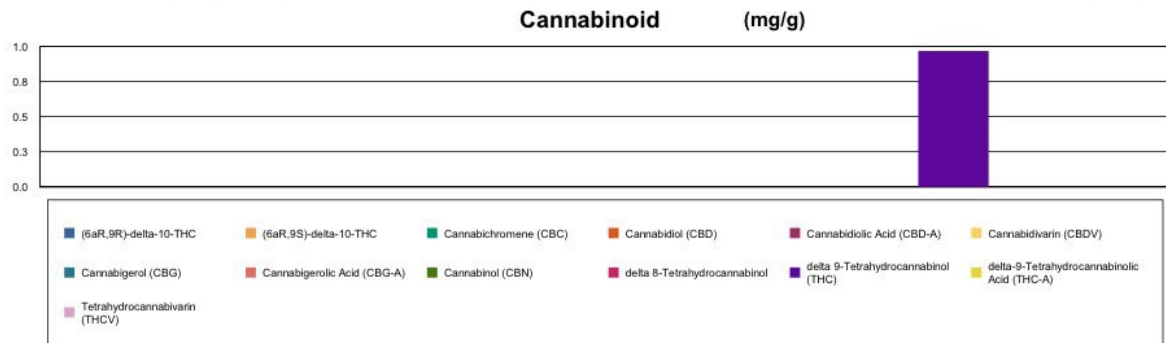
## Cannabinoid Profile

**Test Conditions:** 17°C  
**Extraction Technician:** SH  
**Analytical Chemist:** SH

Extraction Date(s)	Analysis Date(s)
1/8/2024	1/8/2024

Test Method: Cannabinoid Potency by HPLC		Results	
	LOD (mg/g)	%	mg/g
Cannabidiol (CBD)	<0.020		
Cannabidiol Acid (CBD-A)	<0.020		
Cannabigerolic Acid (CBG-A)	<0.020		
Cannabigerol (CBG)	<0.020		
Cannabidiol (CBD)	<0.020		
Tetrahydrocannabivarin (THCV)	<0.020		
Cannabinol (CBN)	<0.020		
Cannabichromene (CBC)	<0.020		
delta 9-Tetrahydrocannabinol (THC)		0.10	0.968
delta-9-Tetrahydrocannabinolic Acid (THC-A)	<0.040		
delta 8-Tetrahydrocannabinol	<0.040		
(6aR,9S)-delta-10-THC	<0.040		
(6aR,9R)-delta-10-THC	<0.040		
<b>Cannabinoids Total</b>		<b>%</b>	<b>mg/g</b>
Max Active THC (delta-9-tetrahydrocannabinol)		0.10	0.97
Max Active CBD		<0.002	<0.020
Total Cannabinoids		0.10	0.97

Following USDA guidelines on uncertainty, Altitude Consulting's uncertainty is calculated to be +/- 5% for all cannabinoids using a coverage factor of 2 (95% confidence interval). Measurement uncertainty has not been factored into reported values. Blank results indicate the compound was below the limit of detection.



**Gary Brook - Laboratory Director - 1/9/2024**

Reporting Limits will vary based on sample extraction weight used for the analysis.

The results of this report are based solely on the sample submitted and cannot be reproduced. Decision Rule: Measurement uncertainty is not accounted for in the reported values. Results are based solely on calculated numbers. Altitude Consulting makes no Statements of conformity. **Pesticide, metal, and microbial analyses are subcontracted to ISO 17025 laboratories.**