



Customer: USACannabisCulture/Nature's Stash/ICC
Address: - Indianapolis, IN 46226
Sample ID: Hemp Derived D9 Gummy
Matrix: Edible
Labnumber: 22K0052-01 Total mass or volume per unit (g or mL): 12.8692

Cannabinoid Profile

Test Conditions: 15°C
Extraction Technician: SH
Analytical Chemist: SH

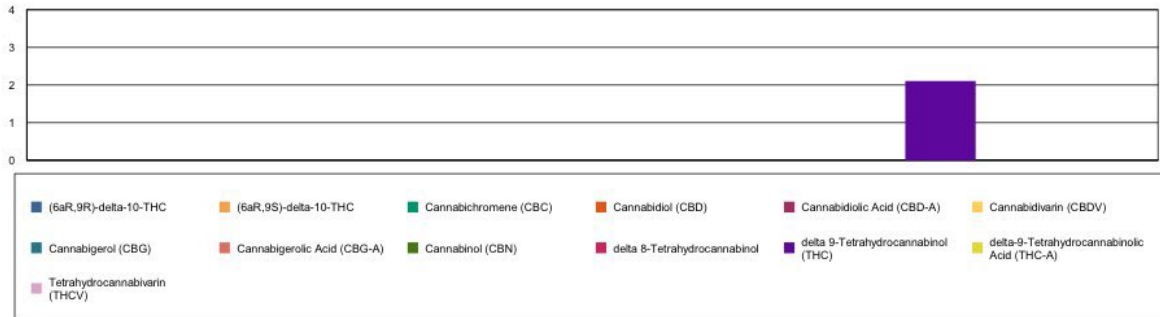
Extraction Date(s)	Analysis Date(s)
11/10/2022	11/10/2022

Cannabinoids (HPLC)		Results		
	LOD (mg/g)	%	mg/g	mg/Edible
Cannabidivarin (CBDV)	<0.040			
Cannabidiolic Acid (CBD-A)	<0.040			
Cannabigerolic Acid (CBG-A)	<0.040			
Cannabigerol (CBG)	<0.040			
Cannabidiol (CBD)	<0.040			
Tetrahydrocannabivarin (THCV)	<0.040			
Cannabinol (CBN)	<0.040			
Cannabichromene (CBC)	<0.040			
delta 9-Tetrahydrocannabinol (THC)		0.21	2.11	27.2
delta-9-Tetrahydrocannabinolic Acid (THC-A)	<0.090			
delta 8-Tetrahydrocannabinol	<0.090			
(6aR,9S)-delta-10-THC	<0.090			
(6aR,9R)-delta-10-THC	<0.090			
Cannabinoids Total		%	mg/g	
Max Active THC (delta-9-tetrahydrocannabinol)		0.21	2.11	
Max Active CBD		<0.004	<0.040	
Total Cannabinoids		0.21	2.11	

Following USDA guidelines on uncertainty, Altitude Consulting's uncertainty is calculated to be +/- 3% for all cannabinoids using a coverage factor of 2 (95% confidence interval). Measurement uncertainty has not been factored into reported values.
Blank results indicate the compound was below the limit of detection.

Test Deviation:
Address updated 11/16/22.

Cannabinoid (mg/g)



Gary Brook - Laboratory Director - 11/16/2022

Reporting Limits will vary based on sample extraction weight used for the analysis.

The results of this report are based solely on the sample submitted and cannot be reproduced. Decision Rule: Measurement uncertainty is not accounted for in the reported values. Results are based solely on calculated numbers. Altitude Consulting makes no Statements of conformity. **Pesticide, metal, and microbial analyses are subcontracted to ISO 17025 laboratories.**