



Customer: 421-Indy Cannabis Company

Address: 1234 Indianapolis Blvd
Indianapolis, IN 46260

Sample ID: Hemp D9 Drink

Matrix: Edible

Labnumber: 23K0024-03 Total mass or volume per unit (g or mL): 60

Density (g/mL): 1.0427

Cannabinoid Profile

Test Conditions: 21°C

Extraction Technician: SH

Analytical Chemist: SH

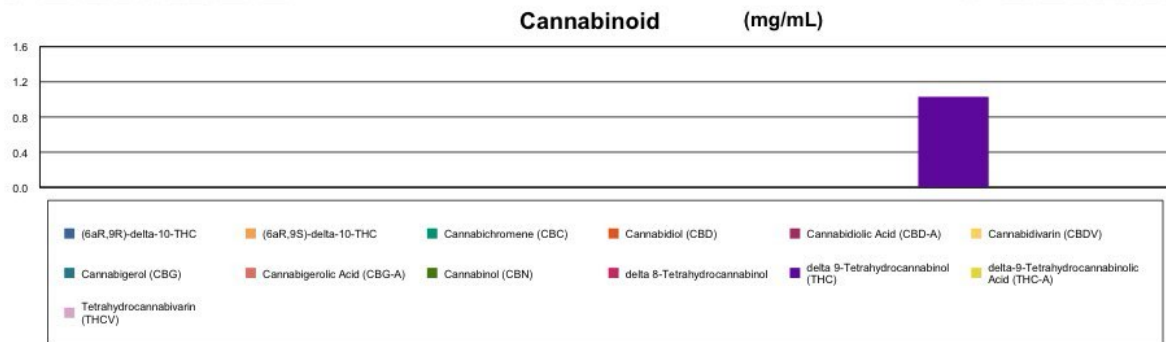
Extraction Date(s)	Analysis Date(s)
11/7/2023	11/6/2023

Test Method: Cannabinoid Potency by HPLC			Results	
	LOD (mg/mL)	%	mg/mL	mg/Bottle
Cannabidiol (CBD)	<0.040			
Cannabidiol Acid (CBD-A)	<0.040			
Cannabigerolic Acid (CBG-A)	<0.040			
Cannabigerol (CBG)	<0.040			
Tetrahydrocannabivarin (THCV)	<0.040			
Cannabinol (CBN)	<0.040			
Cannabichromene (CBC)	<0.040			
delta 9-Tetrahydrocannabinol (THC)		0.10	1.03	61.8
delta-9-Tetrahydrocannabinolic Acid (THC-A)	<0.070			
delta 8-Tetrahydrocannabinol	<0.070			
(6aR,9S)-delta-10-THC	<0.070			
(6aR,9R)-delta-10-THC	<0.070			
Cannabinoids Total		%	mg/mL	
Max Active THC (delta-9-tetrahydrocannabinol)		0.10	1.03	
Max Active CBD		<0.004	<0.040	
Total Cannabinoids		0.10	1.03	

Following USDA guidelines on uncertainty, Altitude Consulting's uncertainty is calculated to be +/- 5% for all cannabinoids using a coverage factor of 2 (95% confidence interval). Measurement uncertainty has not been factored into reported values. Blank results indicate the compound was below the limit of detection.

Test Deviation:

Total volume added 04/02/24



END OF REPORT

END OF REPORT

Gary Brook - Laboratory Director - 4/2/2024

Reporting Limits will vary based on sample extraction weight used for the analysis.

The results of this report are based solely on the sample submitted and cannot be reproduced. Decision Rule: Measurement uncertainty is not accounted for in the reported values. Results are based solely on calculated numbers. Altitude Consulting makes no Statements of conformity. Pesticide, metal, and microbial analyses are subcontracted to ISO 17025 laboratories.