



Customer: Indy Cannabis Co/Deez Distro
Address: 1234 Indianapolis Blvd
Indianapolis, IN 46260
Sample ID: D9 Strawberry Syrup
Matrix: Edible
Labnumber: 24A0029-08

Density (g/mL): 1.2945

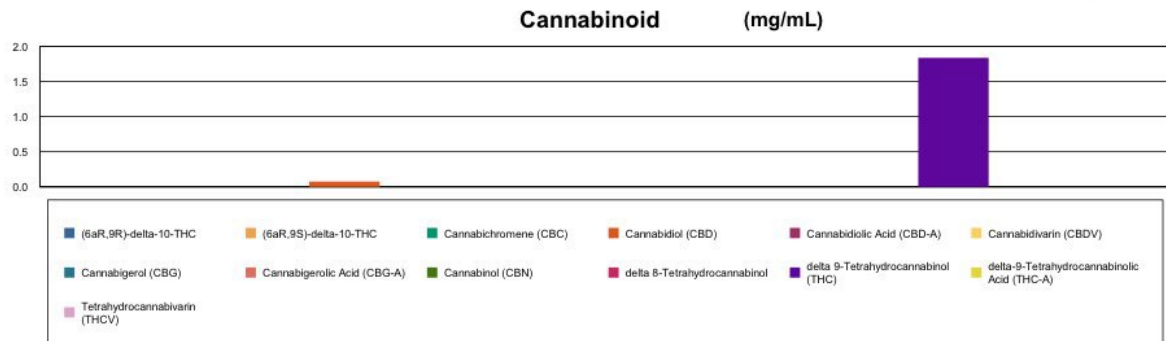
Cannabinoid Profile

Test Conditions: 17°C
Extraction Technician: SH
Analytical Chemist: SH

Extraction Date(s)	Analysis Date(s)
1/8/2024	1/9/2024

Test Method: Cannabinoid Potency by HPLC		Results	
	LOD (mg/mL)	%	mg/mL
Cannabidiol (CBD)	<0.050	0.008	0.076
Tetrahydrocannabivarin (THCV)	<0.050		
Cannabinol (CBN)	<0.050		
Cannabichromene (CBC)	<0.050		
delta 9-Tetrahydrocannabinol (THC)		0.18	1.84
delta-9-Tetrahydrocannabinolic Acid (THC-A)	<0.10		
delta 8-Tetrahydrocannabinol	<0.10		
(6aR,9S)-delta-10-THC	<0.10		
(6aR,9R)-delta-10-THC	<0.10		
Cannabinoids Total		%	mg/mL
Max Active THC (delta-9-tetrahydrocannabinol)		0.18	1.84
Max Active CBD		0.01	0.08
Total Cannabinoids		0.19	1.91

Following USDA guidelines on uncertainty, Altitude Consulting's uncertainty is calculated to be +/- 5% for all cannabinoids using a coverage factor of 2 (95% confidence interval). Measurement uncertainty has not been factored into reported values. Blank results indicate the compound was below the limit of detection.



Gary Brook - Laboratory Director - 1/9/2024

Reporting Limits will vary based on sample extraction weight used for the analysis.

The results of this report are based solely on the sample submitted and cannot be reproduced. Decision Rule: Measurement uncertainty is not accounted for in the reported values. Results are based solely on calculated numbers. Altitude Consulting makes no Statements of conformity. **Pesticide, metal, and microbial analyses are subcontracted to ISO 17025 laboratories.**